

- EXCLUSION CRITERIA (Red Flags)**
- Abnormal Neuro Exam
 - < 6 years old
 - < 6 mo headache history
 - Atypical presentation i.e. thunderclap
 - Progressive Severity in ED
 - Positional/sleep related headache
 - New or worst headache
 - Different from typical headache
 - High risk populations- immunocompromised, sickle cell, etc

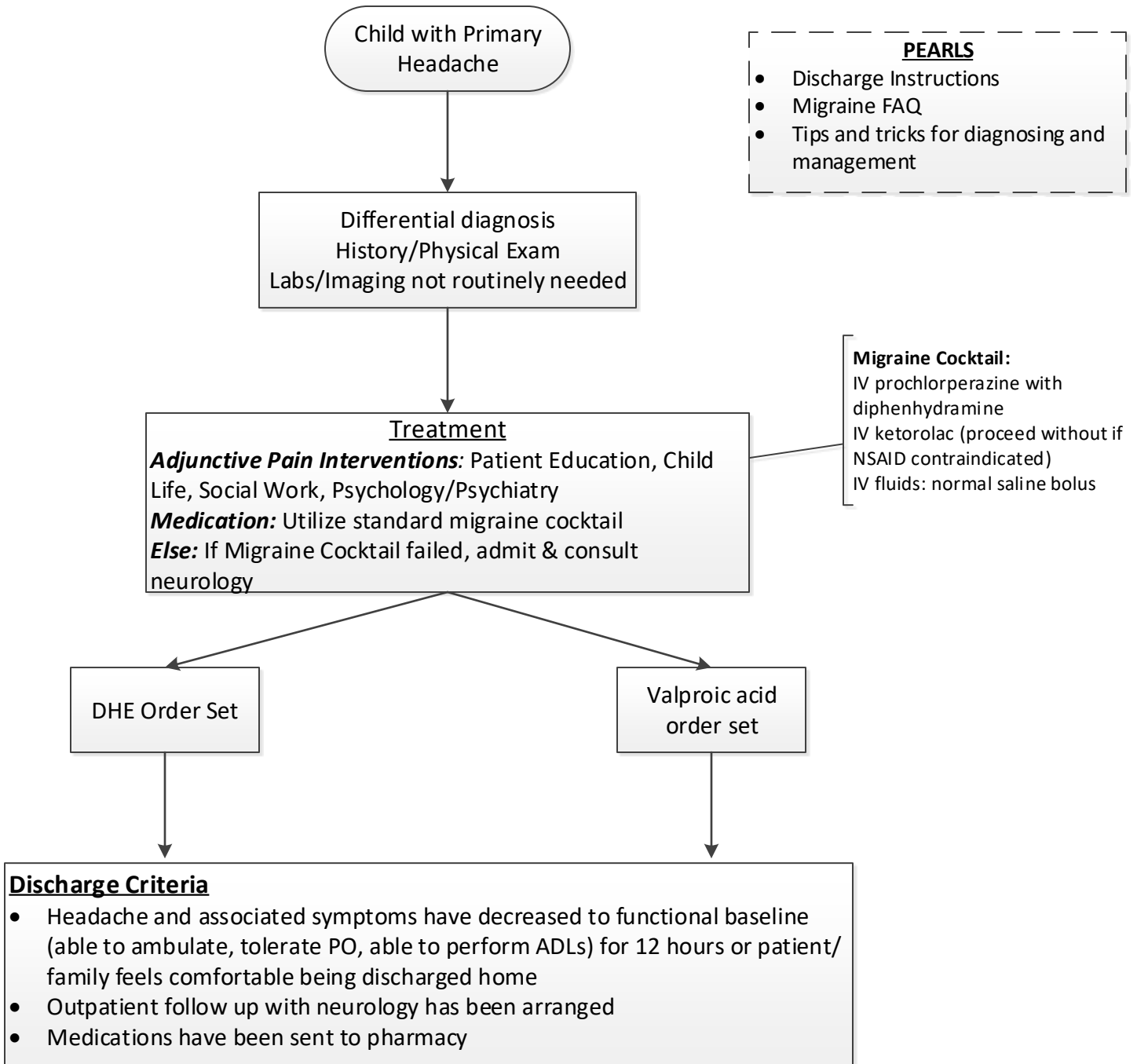
- PEARLS**
- If considering imaging, MRI preferred
 - Do not give steroids
 - Do not give opioids or barbiturates

- Enteral Medications**
- Acetaminophen 15 mg/kg PO (max 1 g)
 - Ibuprofen 10 mg/kg PO (max 800 mg)
 - Naproxen 10 mg/kg PO (max 660 mg)
 - Ondansetron 0.15 mg/kg PO (max 8 mg)
 - Diphenhydramine 0.5 mg/kg PO (max 50 mg)

- IV Medications**
- Acetaminophen 15 mg/kg IV (max 1 g)
 - ketorolac 0.5 mg/kg PO (max 30 mg)
 - prochlorperazine 0.15 mg/kg IV (max 10 mg)
 - Ondansetron 0.15 mg/kg IV (max 8 mg)
 - Diphenhydramine 0.5 mg/kg IV (max 50 mg)
 - Normal saline bolus 20 ml/kg IV (max 1 L)
 - Valproic acid 20 mg/kg IV (max 1,000 mg)

- Treatment of Dystonic Reaction**
- Diphenhydramine 0.5 mg/kg IV (max 50 mg)

- Triptans**
- Rizatriptan tab or MLT (6-17 yo)
 - 20-39 kg = 5 mg PO
 - 40 kg = 10 mg PO
 - Zolmitriptan nasal spray (12-17 yo)
 - 20-39 kg = 2.5 mg
 - 40 kg = 5 mg
 - Sumatriptan PO
 - <40 kg = 25 mg PO
 - >40 kg = 50-100 mg PO
 - Sumatriptan nasal spray
 - 20-39 kg = 10 mg
 - 40 kg = 20 mg
- ***Contraindicated in CV dz, stroke, or pregnancy





EBOC Project Owner: Dr. William Qubty

Approved by the Pediatric Migraine Workgroup Team

Revision History

Date Approved: June 2020

Next Review Date: June 2024

Pediatric Migraine Headache EBOC team:

William Qubty, MD

Sujit Iyer, MD

Jorge Ganem, MD

Carmen Garudo, PM

EBOC Leadership Committee:

Sarmistha Hauger, MD

Terry Stanley, DNP, RN

Deb Brown, RN

Sujit Iyer, MD

Tory Meyer, MD

Nilda Garcia, MD

Meena Iyer, MD

Lynn Thoreson, DO

LEGAL DISCLAIMER: The information provided by Dell Children's Medical Center (DCMC), including but not limited to Clinical Pathways and Guidelines, protocols and outcome data, (collectively the "Information") is presented for the purpose of educating patients and providers on various medical treatment and management. The Information should not be relied upon as complete or accurate; nor should it be relied on to suggest a course of treatment for a particular patient. The Clinical Pathways and Guidelines are intended to assist physicians and other health care providers in clinical decision-making by describing a range of generally acceptable approaches for the diagnosis, management, or prevention of specific diseases or conditions. These guidelines should not be considered inclusive of all proper methods of care or exclusive of other methods of care reasonably directed at obtaining the same results. The ultimate judgment regarding care of a particular patient must be made by the physician in light of the individual circumstances presented by the patient. DCMC shall not be liable for direct, indirect, special, incidental or consequential damages related to the user's decision to use this information contained herein.