

ASTHMA GUIDELINE

LEGAL DISCLAIMER: The information provided by Dell Children's Medical Center (DCMC), including but not limited to Clinical Pathways and Guidelines, protocols and outcome data, (collectively the "Information") is presented for the purpose of educating patients and providers on various medical treatment and management. The information should not be relied upon as complete or accurate; nor should it be relied on to suggest a course of treatment for a particular patient. The Clinical Pathways and Guidelines are intended to assist physicians and other health care providers in clinical decision-making by describing a range of generally acceptable approaches for the diagnosis, management, or prevention of specific diseases or conditions. These guidelines should not be considered inclusive of all proper methods of care or exclusive of other methods of care reasonably directed at obtaining the same results. The ultimate judgment regarding care of a particular patient must be made by the physician in light of the individual circumstances presented by the patient. DCMC shall not be liable for direct, indirect, special, incidental or consequential damages related to the user's decision to use this information contained herein.

Definition:

Asthma is a chronic inflammatory disorder of the airways in which many cells and cellular elements play a role. The chronic inflammation is associated with airway hyperresponsiveness that leads to recurrent episodes of wheezing, breathlessness, chest tightness, and coughing. Symptoms may worsen in the evening or in the morning. (GINA Global Strategy for Asthma Management and Prevention, 2023) Asthma is one of the most common chronic disorders in children and is one of the leading causes of school absenteeism.

Etiology:

Although the exact etiology of asthma is unknown, environmental factors and allergens are known factors influencing exacerbations.

Differential Diagnosis:

GERD
Other causes of chronic aspiration
Recurrent VLR
Sinusitis
Foreign body aspiration

Guideline Eligibility Criteria:

Patients 2 to 18 years of age with acute asthma exacerbation

Guideline Exclusion Criteria:

Bronchiolitis
Cystic Fibrosis
Tracheostomy
Neuromuscular disease
Immunodeficiency
Cardiac disease
Other Chronic Lung Disease (unless otherwise specified)

Diagnostic Evaluation:

History and physical pertinent to the exacerbation should be completed concurrently with prompt initiation of treatment. (GINA Global Strategy for Asthma Management and Prevention, 2023)

History:

Assess for severity and duration of symptoms, medication history, risk factors and common times or exacerbations to onset of symptoms.

Physical Examination:

To include- assessment of dyspnea, respiratory rate, work of breathing, presence and location of wheezing, need for oxygen

Laboratory Tests:

None recommended for uncomplicated asthma exacerbation

Critical Points of Evidence

Evidence Supports

Use of a common scoring tool and pathway to categorize severity and improve clinical outcomes
Oxygen for saturation consistently below 90%
Short-acting beta-agonist as soon as treatment can be started
Glucocorticosteroids within the first hour of arrival to hospital/ED
Ipratropium bromide for moderate to severe asthma
Intravenous magnesium sulfate for treatment of moderate to severe asthma

Evidence Lacking/Inconclusive

Terbutaline and epinephrine should be given only if aerosolized treatments are not tolerated or the patient has not been responsive to treatments listed above
Non-invasive positive pressure ventilation prior to intubation

Evidence Against

Chest x-ray not recommended for routine cases
Blood gas
Heliox

Practice Recommendations

Treatments for asthma have been widely studied and recommendations adopted based on studied and recommended standards of care. Many of these standards of care have been adopted by the Joint Commission and were set forth as Orynx measures for pediatric healthcare agencies.

Common Asthma Scoring Tool: Modified Quereshi PAS

Measuring response to therapy can be a very useful tool in the management of asthma. No universal pediatric asthma scoring tool has been identified as superior, but there are several in the literature that have been validated and implemented in clinical practice. Our institution has adopted a modified version of the Quereshi Pediatric Asthma Score.

Treatment Recommendations

(for full recommendations see attached pathway and addendums)

Beta-agonist dosing (albuterol)

Emergency Department (PAS score Q1 hour)

1st hour

- Mild (PAS 0): No treatment required
- Mild (PAS 1-2): Albuterol 5 mg neb
- Moderate (PAS 3-5): Albuterol neb over 1 hour (<20 kg: 10 mg neb or ≥20 kg: 15 mg neb)
- Moderate to Severe (PAS 6-10): Albuterol Continuous (<20 kg: 10 mg neb or ≥20 kg: 15 mg neb)

2nd hour

- Mild (PAS 0-2): Discharge home
- Moderate (PAS 3-5): Albuterol neb over 1 hours (<20 kg: 10 mg neb or ≥20 kg: 15 mg neb)
- Moderate to Severe (PAS 6-7): Albuterol over 1 hour (<20 kg: 10 mg neb or ≥20 kg: 15 mg neb)
- Severe (PAS 8-10): Albuterol Continuous (<20 kg: 10 mg neb or ≥20 kg: 15 mg neb)

3rd hour

- Mild (PAS 0-2): Discharge home
- Moderate (PAS 3-5): Albuterol neb over 1 hour (<20 kg: 10 mg neb or ≥20 kg: 15 mg neb)
- Moderate to Severe (PAS 6-7): Albuterol over 1 hour (<20 kg: 10 mg neb or ≥20 kg: 15 mg neb)
- Severe (PAS 8-10): Albuterol Continuous (<20 kg: 15 mg neb or ≥20 kg: 20 mg neb)

Inpatient (PAS score Q4hr unless otherwise noted)

- Mild: Albuterol Q4 hours (8 puffs with inhaler)
- Moderate: Albuterol Q3 hours (<20 kg: 5 mg neb or ≥20 kg: 7.5 mg neb)
- Moderate to Severe: Albuterol Continuous (<20 kg: 10 mg neb or ≥20 kg: 15 mg neb, Q2hr PAS scores at minimum)
- Severe: Albuterol Continuous (<20 kg: 15 mg neb or ≥20 kg: 20 mg neb, Q2hr PAS scores at minimum)

Steroids

There is strong evidence that corticosteroids speed the resolution of airflow obstruction and reduce rate of relapse, especially if given within the **1st hour of admission to ED.**

- **Recommended: Dexamethasone** has shown to be just as effective as prednisolone and has the added benefit of decreased vomiting and less doses, thus increasing compliance.
 - Dosing: Dexamethasone 0.6 mg/kg PO/IM/IV (max: 16 mg) once daily x2 doses (*Separate the 2 doses by 24-36 hours*)
- For dexamethasone allergy or intolerance: Prednisolone
 - Dosing: Prednisolone 1 mg/kg/day PO Q12hr (max: 20 mg/dose Q12 or 40 mg/dose Qday) for 5 days total steroid exposure

- Severe exacerbations Methylprednisolone
 - Initial Dose: Methylprednisolone 1 mg/kg IV x1 (max: 30 mg)
 - (skip this step if methylprednisolone or dexamethasone already given)
 - 6 hours later: methylprednisolone 0.5 mg/kg IV Q6h (max: 30mg/dose)
- Full recommendations and methylprednisolone weaning instructions are supplied in [addendum 1](#)

Ipratropium Bromide

Strongly recommended as an adjunctive therapy for patients with moderate to severe symptoms (1st hour)

- Dosing: Ipratropium 1 mg via neb- in conjunction with Albuterol in the 1st hour

Magnesium Sulfate

Strong recommendation to be used as an adjunctive therapy when there is no response to conventional therapies.

- Dosing: Magnesium Sulfate 50 mg/kg IV (max 2 g) over 20-30 min. x1
 - Strongly consider NS bolus if not already given
 - Only one dose may be administered on acute care units, other than pediatric intensive care, in a 24 hour period

Terbutaline

Terbutaline and epinephrine should be given only if aerosolized treatments are not tolerated or the patient has not responded to treatments listed above

- Dosing: 10 mcg/kg SQ (Max 250 mcg=0.25 mL) X1 for child in extremis (can be given q20min x 3 doses until IV established)
 - If considering IV Terbutaline it must be ordered in concert with STAT PICU consult
 - Recommended starting dose: 10 mcg/kg (max 250 mcg) IV load over 15 minutes
 - followed by continuous IV drip 0.4 mcg/kg/min
 - STAT call to Pharmacy for IV drip Terbutaline

Pediatric Intensive Care ONLY

Ketamine

- Dosing Ketamine 5 mcg/kg/minute continuous IV infusion (*titrate per protocol to meet sedation needs*)

Admission Criteria

Supplemental oxygen requirement

No improvement to baseline after multiple respiratory treatments

Stage 1 (Score 1-2) = Acute Care Unit

**Note: Discharge is recommended for scores of 0-2, admission will only occur for score 0-2 if oxygen is required or there is concern for deterioration*

Stage 2 (Score 3-5) = Acute Care Unit

Stage 4 (Score 6-7) = Acute Care Unit

Stage 5 (Score 8-10) = Pediatric Intensive Care Unit

Consults and Referrals

Pulmonology for patients with chronic symptoms and multiple admissions

Infection Control

Standard isolation only unless viral factors are suspected

Caregiver Education

Children should not be exposed to passive smoke, explore smoking cessation opportunities as indicated

Emphasize importance of follow-up appointments

Emphasize importance of following recommendations on the Home Management Plan of Care (HMPOC)

Discharge Criteria

Albuterol - 8 puffs or 5 mg q4hr or longer and receive at least 1 dose

Oxygen Saturation >90 for more than 2 hours

Follow-Up Care

Generally, follow-up care is 1 - 2 days post-discharge with the primary care doctor

Prevention

Caregiver and patient knowledge of HMPOC

Knowledge of common triggers and how to prepare or avoid

Proper use and understanding of inhaled corticosteroids and controller medications

Asthma Action Plan

Outcome Measures

Emergency Department (ED):

Time from ED triage to administration of beta-agonist

Time from ED triage to administration of steroids

Proportion receiving 1st neb within 60 minutes of arrival

Proportion receiving steroid within 60 minutes of arrival

Proportion of patients assessed for understanding of HMPOC

Readmissions to ED within 30 days and within 12 months

Inpatient (IP):

Proportion of patients with a documented HMPOC

Proportion of patients assessed for their understanding of HMPOC

Average length of stay

EMERGENCY DEPARTMENT Entry Assessment for ASTHMA PATHWAY

If RESPIRATORY ARREST IMMINENT-
Triage and Initiate care in resuscitation room

Exclusion Criteria:
bronchiolitis, cystic fibrosis, tracheostomy patients, neuromuscular diseases, immunodeficiency & cardiac patients (unless ordered), and other chronic lung disease (unless ordered)

Albuterol to MDI w/ Spacer Puff Conversions

5 mg neb = 8 puffs
10 mg neb = 16 puffs
Q3 hours = 5 puffs Q1 hour x3
Continuous = 5 puffs Q20min. X3
15 mg neb = 24 puffs
Q3 hours = 8 puffs Q1 hour x3
Continuous = 8 puffs Q20min. X3

Inclusion Criteria:
Patients 2-18 years of age with acute asthma exacerbation

1st HOUR

- Supplemental Oxygen should be administered to maintain SaO₂ >90%
- Initial PAS score done at triage and on room placement
NOTE: CXR and Blood Gas are not recommended for Routine Asthma Exacerbation

PAS 1-2 Mild

- Albuterol 5 mg Neb
- Repeat per clinician discretion
- Consider Steroids in some cases- consult with physician

PAS 3-5 Moderate

- Albuterol Neb over 1 hour
<20 kg: Albuterol 10 mg / ≥ 20 kg: Albuterol 15 mg
• Ipratropium 1 mg via neb- in conjunction with Albuterol
• Dexamethasone 0.6 mg/kg (max 16 mg) PO/IM or
- for severe exacerbations Methylprednisolone 1mg/kg (max 30mg) IV for PO intolerant
- for dexamethasone allergy/intolerance: Prednisolone 1 mg/kg (max: 20 mg/dose) PO

PAS 6-10 – Moderate to Severe

- Albuterol Neb over 1 hour
<20 kg: Albuterol 10 mg / ≥ 20 kg: Albuterol 15 mg
• Ipratropium 1 mg via neb- in conjunction with Albuterol
• Dexamethasone 0.6 mg/kg (max 16 mg) PO/IM or
- for severe exacerbations Methylprednisolone 1mg/kg (max 30mg) IV for PO intolerant
- for dexamethasone allergy/intolerance: Prednisolone 1 mg/kg (max: 20 mg/dose) PO
****Consider early adjunctive therapy**

2nd HOUR

***Reassess PAS Score 1**

PAS 0-2 Mild Discharge to HOME

- Asthma Action Plan
- Schedule PCP Follow-up
- Asthma Education to include Smoking Cessation referral if indicated
- Re-label Albuterol
- Script for Controller Meds, if applicable
- Script for Dexamethasone Dose #2- 0.6 mg/kg (max 16 mg) PO x 1 to be given 24-36 hours after 1st dose, if applicable

PAS 3-5 Moderate

- Albuterol Neb over 1 hour
<20 kg: Albuterol 10 mg
≥20 kg: Albuterol 15 mg

PAS 6-7 Moderate to Severe

- Albuterol Neb over 1 hour
<20 kg: Albuterol 10 mg
≥20 kg: Albuterol 15 mg
****Consider adjunctive therapy**

PAS 8-10 Severe POOR RESPONDER

- Albuterol Neb over 1 hour (continuous) as necessary
<20 kg: Albuterol 10 mg/ ≥ 20 kg: Albuterol 15 mg
****Administer adjunctive therapy if not already done
Contact PICU for Admission if Terbutaline used in 2nd hour**

3rd HOUR

***Reassess PAS Score 1**

PAS 0-2 Mild Discharge to HOME

See above recommendations

PAS 3-5 Moderate Admit to Acute Care Unit

<20 kg: Albuterol 10 mg Neb Q2h
≥20 kg: Albuterol 15 mg Neb Q2h

PAS 6-7 Moderate to Severe Admit to Acute Care Unit
(see Addendum 5 for AC Unit exclusion criteria, Consider IMC admission)

<20 kg: Albuterol 10 mg Neb over 1 hour
≥20 kg: Albuterol 15 mg Neb over 1 hour
****Consider adjunctive therapy**

PAS 8-10 Severe POOR RESPONDER- Admit to PICU

<20 kg: Albuterol 15 mg Neb over 1 hour/Continuous
≥20 kg: Albuterol 20 mg Neb over 1 hour/Continuous
****Administer adjunctive therapy if not already given**

***Reassess PAS Score-** If completing a continuous neb and considering discharge home it is **RECOMMENDED** that you observe the patient for at least 60 minutes after the completion of the neb, then rescore the patient for discharge readiness. **1**

****ADJUNCTIVE THERAPY OPTIONS****

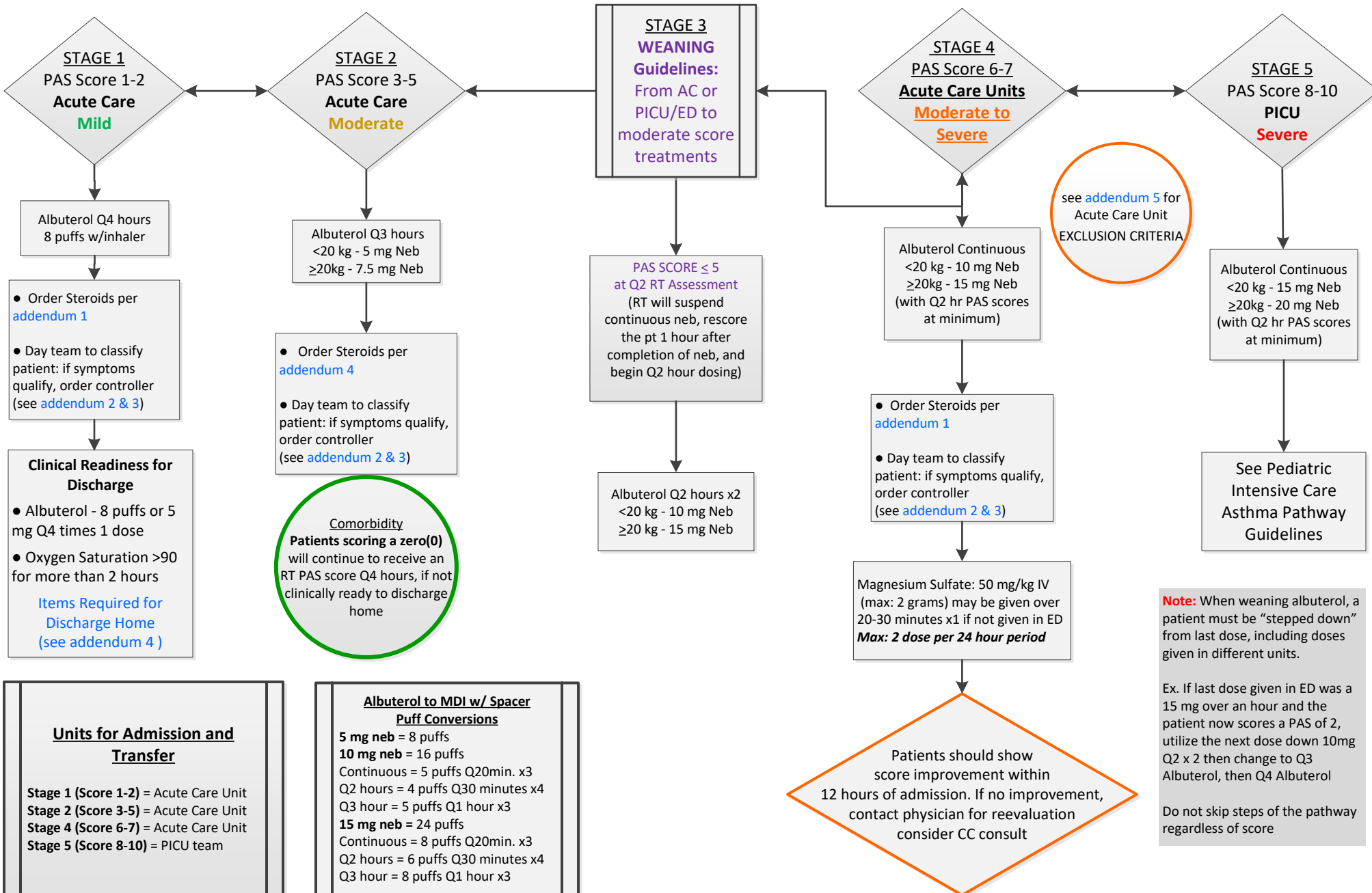
- **IV NS bolus** (20 mL/kg, max 1L)
- **Magnesium Sulfate** 50 mg/kg IV (max 2 g) over 20-30 min. x1
Strongly consider NS bolus if not already given
- **Terbutaline** 10 mcg/kg SQ (Max 250 mcg = 0.25 ml) X1 for child in extremis (can be given Q20 minutes x3 doses until IV established)
- **If considering IV Terbutaline**
 - **Must be ordered in concert with STAT PICU consult**
 - Recommended starting dose:
 - 10 mcg/kg (max 250 mcg) IV load over 15 minutes, followed by: Terbutaline continuous IV drip 0.4 mcg/kg/min
 - STAT call to Pharmacy for IV drip Terbutaline

Assessment		0	1	2
RR	Respiratory Rate (Obtain over 30 seconds and multiply x2)			
	2-3 years old	≤34	35-39	≥40
	4-5 years old	≤30	31-35	≥36
	6-12 years old	≤26	27-30	≥31
	>12 years old	≤23	24-27	≥28
O ₂	Oxygen Requirement (RA for 2min- return O ₂ if Sats <90)	>95% RA	90-95% RA	<90% RA
A	Auscultation	BBS clear to End exp. wheeze	Expiratory Wheezes	Insp. & Exp. wheeze or Diminished BS
w o B	Work of Breathing- nasal flaring, suprasternal, intercostal or subcostal muscle use	≤1 accessory muscle	2 accessory muscles	≥3 accessory muscles
D	Dyspnea	speaks full sentences, playful, babbles	Speaks partial sentences, short cry	Speaks short phrases, single words, grunting

PAS (Quereshi, et al) Pediatric Asthma Score – modified version (for patients >2yrs of age)

Inpatient Asthma Pathway Guidelines

- Reassess PAS score with every treatment
- Supplemental O2 to maintain SaO2 >90%
- Smoking cessation counseling when indicated



see addendum 5 for Acute Care Unit EXCLUSION CRITERIA

Note: When weaning albuterol, a patient must be “stepped down” from last dose, including doses given in different units.

Ex. If last dose given in ED was a 15 mg over an hour and the patient now scores a PAS of 2, utilize the next dose down 10mg Q2 x 2 then change to Q3 Albuterol, then Q4 Albuterol

Do not skip steps of the pathway regardless of score

Units for Admission and Transfer

Stage 1 (Score 1-2) = Acute Care Unit
 Stage 2 (Score 3-5) = Acute Care Unit
 Stage 4 (Score 6-7) = Acute Care Unit
 Stage 5 (Score 8-10) = PICU team

Albuterol to MDI w/ Spacer Puff Conversions

5 mg neb = 8 puffs
 10 mg neb = 16 puffs
 Continuous = 5 puffs Q20min. x3
 Q2 hours = 4 puffs Q30 minutes x4
 Q3 hour = 5 puffs Q1 hour x3
 15 mg neb = 24 puffs
 Continuous = 8 puffs Q20min. x3
 Q2 hours = 6 puffs Q30 minutes x4
 Q3 hour = 8 puffs Q1 hour x3

Pediatric Intensive Care Asthma Pathway Guidelines

Inclusion criteria:

- Patients 2-18 years of age with acute asthma exacerbation
- Poor responders to treatment
- Patients in Extremis
- Patients Scoring 8 or higher on the PAS
- Patients not showing improvement within 6 hours of admission to the Acute Care Unit

Standards of Care (care every patient will receive)

□ Albuterol Continuous Nebulizer:

PAS 8-10= < 20 kg = 15 mg/hr or \geq 20 kg = 20 mg/hr

PAS 6-7= < 20 kg = 10 mg/hr or \geq 20 kg = 15 mg/hr once patient is weaned from terbutaline & magnesium sulfate drip

Respiratory Therapy will score the patient, at a minimum, every two hours

Respiratory Therapy will contact the Physician/ Mid-level / Resident for weaning orders

Please see Inpatient Asthma Pathway Guidelines for dosing once patient is deemed ready to be off continuous nebs

□ Methylprednisolone: 0.5 mg/kg IV Q6 hours x 24 hours (max: 30 mg per dose)

(see [Addendum 1](#) for methylprednisolone management and weaning guidelines)

□ Ipratropium: < 20 kg - 0.25 mg or > 20 kg - 0.5 mg inhaled Q6 hours x 24 hours

□ Magnesium Sulfate: 50 mg/kg IV (2 grams max) over 20-30 minutes (if not given in ED or Acute Care Unit)

Medications for Refractory Treatment

□ Ipratropium: < 20 kg - 0.25 mg or \geq 20 kg - 0.5 mg inhaled Q6 hours, may continue per physician discretion if necessary

□ Terbutaline: Loading dose 10 mcg/kg (max: 250 mcg) over 15 minutes followed by continuous IV infusion 0.4 mcg/kg/minute

Terbutaline infusion should be weaned to off before weaning continuous Albuterol

□ Magnesium Sulfate : < 30 kg - 25 mg/kg/hr or \geq 30 kg - 20 mg/kg/hr continuous IV infusion (max: 2 g per hour)

Check serum magnesium 2 hours after the infusion is started then Q8 hours (serum magnesium target = 3-5 mg/dL)

Titrate by 5 mg/kg/hr based on serum levels

□ Ketamine : 5 mcg/kg/minute continuous IV infusion

Titrate per protocol to meet sedation needs

Recommendations for Discharge or Transfer out of the Pediatric Intensive Care Unit

● **DISCHARGE HOME**

PAS 1-2 (ready for discharge home) - See [Addendum 4](#) for Discharge Readiness Criteria and Requirements

● **ADMIT TO ACUTE CARE UNIT**

PAS 1-2 (NOT ready for discharge home)

PAS 3-5

● **ADMIT TO IMC**

PAS 6-7 (not exhibiting steady improvement, but no longer requiring PICU care)



Ascension Texas

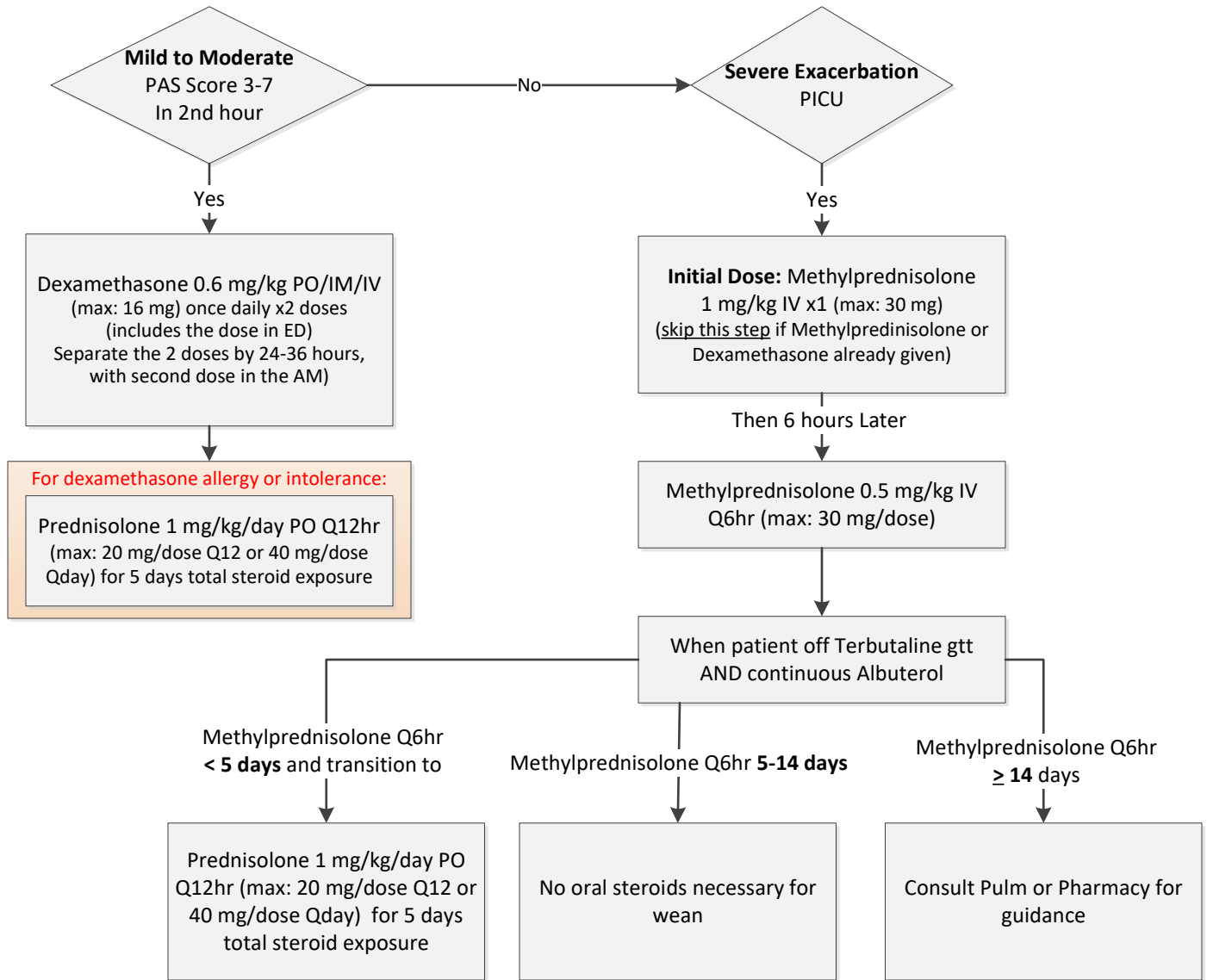
Austin, TX 78723

Patient Label

**Pediatric Asthma Albuterol Titration
Protocol Severity Score Sheet**

Year:	Date (month, day):								
	Time:								
	Initials:								
	Credentials (example: RN, RT):								
	Pre or Post Score? RT ONLY:								
Circle the appropriate assessment score below.									
Respiratory	Enter Respiratory Rate (If obtained over 30 seconds, multiply by 2)	Rate	Rate	Rate	Rate	Rate	Rate	Rate	Rate
	2-3 yrs: 34 or Less Breaths per Minute 4-5 yrs: 30 or Less Breaths per Minute 6-12 yrs: 26 or Less Breaths per Minute >12 yrs: 23 or Less Breaths per Minute	0	0	0	0	0	0	0	0
	2-3 yrs: 35-39 Breaths per Minute 4-5 yrs: 31-35 Breaths per Minute 6-12 yrs: 27-30 Breaths per Minute >12 yrs: 24-27 Breaths per Minute	1	1	1	1	1	1	1	1
	2-3 yrs: 40 or More Breaths per Minute 4-5 yrs: 36 or More Breaths per Minute 6-12 yrs: 31 or More Breaths per Minute >12 yrs: 28 or More Breaths per Minute	2	2	2	2	2	2	2	2
Room Air Oxygen Saturation	Room Air O2 Sat. More Than 95%	0	0	0	0	0	0	0	0
	Room Air O2 Sat. 90-95% RA SpO2	1	1	1	1	1	1	1	1
	Room Air O2 Sat. Less than 90%	2	2	2	2	2	2	2	2
Auscultation	Clear BS or End Expiratory Wheezes	0	0	0	0	0	0	0	0
	Expiratory Wheezes	1	1	1	1	1	1	1	1
	Inspiratory & Expiratory Wheezes or Diminished Breath Sounds	2	2	2	2	2	2	2	2
Work of Breathing	Use of 0-1 Accessory Muscles	0	0	0	0	0	0	0	0
	Use of 2 Accessory Muscles	1	1	1	1	1	1	1	1
	Use of 3 or More Accessory Muscles	2	2	2	2	2	2	2	2
Dyspnea (Speaks in)	Full Sentences, Playful, Babbles	0	0	0	0	0	0	0	0
	Partial Sentences, Short Cry	1	1	1	1	1	1	1	1
	Short Phrases, Single Words, Grunting	2	2	2	2	2	2	2	2
Total Asthma Severity Score (0-10)									
Asthma Protocol Stage RT ONLY									
Albuterol Dose Given (mg) RT ONLY									
Next Assessment Time									
Signature, Initials:		Signature, Initials:							
Signature, Initials:		Signature, Initials:							

ADDENDUM 1: Ordering and Weaning Instructions for Steroid Management in Asthma

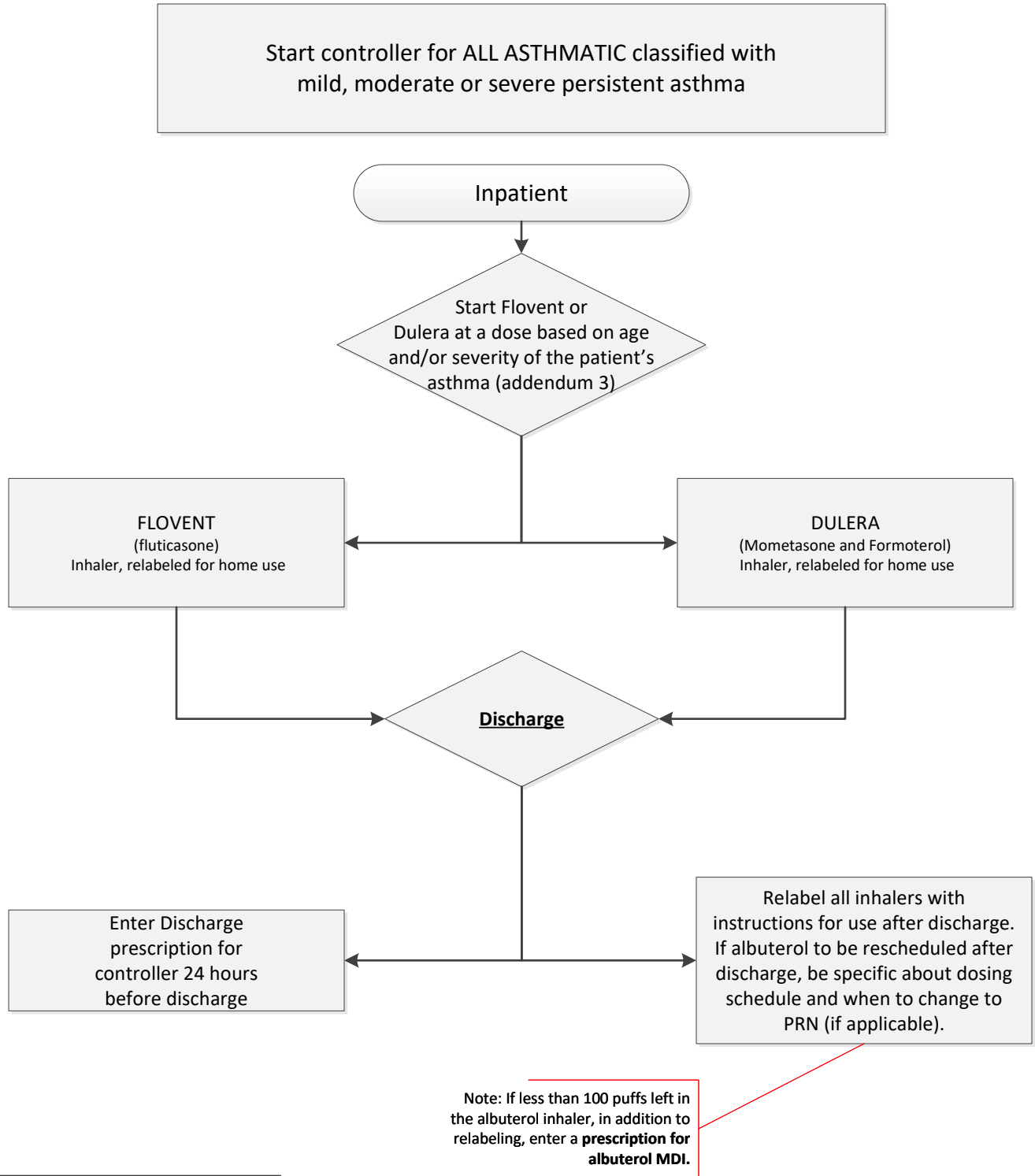


Patients started on methylprednisolone (Solumedrol) should complete their steroid course with prednisolone (Orapred).

Exception:

If patient has received only one dose of methylprednisolone then they can receive the 2 doses of dexamethasone (Decadron) as is outlined in the ED and Inpatient Pathways.

ADDENDUM 2: Ordering Instructions for Inhalers at Discharge



HOW TO FIND INSURANCE INFORMATION IN COMPASS

1. Open patient's electronic chart
2. Go to patient information band on left hand side
3. Choose face sheet tab
4. Scroll down for **insurance information**

Addendum 3 Inhaled Corticosteroids for Asthma

Generic Name	Brand Name	Low Daily Dose (mcg)			Medium Daily Dose (mcg)			High Daily Dose (mcg)		
		0-4 yr	5-11 yr	≥ 12 yr	0-4 yr	5-11 yr	≥ 12 yr	0-4 yr	5-11 yr	≥ 12 yr
Beclomethasone HFA 40 or 80 mcg/puff	Qvar, Qvar RediHaler	N/A	40-80	80-240	N/A	160	240-480	N/A	320	> 480
Budesonide DPI 90,180,200 mcg/inh	Pulmicort Flexhaler	N/A	100-200	200-400	N/A	200-400	400-800	N/A	>400	>800
Budesonide neb 0.25mg/2ml, 0.5mg/2ml	Pulmicort	0.5mg	0.25-0.5mg	N/A	0.5-1mg	0.5-1mg	N/A	> 1mg	2mg	N/A
Budesonide/Formoterol HFA: 80/4.5, 160/4.6	Symbicort	N/A	160	160	N/A	320	320	N/A	320	640
Ciclesonide HFA 80, 160 mcg/puff	Alvesco	N/A	80	80-160	N/A	160	160-320	N/A	320	320-640
Fluticasone HFA 44,110,220 mcg/puff	Flovent	176 (mask)	88-176	88-220	176-440 (mask)	220-440	440	> 440 (mask)	880	880
Fluticasone/Salmeterol HFA: 45/21,115/21,230/21	Advair	180 (mask)	90-180	90-230	460 (mask)	230-460	460	920 (mask)	920	920
Fluticasone/Salmeterol Disk: 100/50,250/50,500/50	Advair	N/A	200	200	N/A	500	500	N/A	1000	1000
Mometasone DPI 110,220 mcg/inh	Asmanex	N/A	110	110-200	N/A	220-440	220-440	N/A	> 440	>440
Mometasone/Formoterol HFA: 50/5, 100/5, 200/5	Dulera	N/A	100	200	N/A	100	400	N/A	200	800

N/A = Dosing not available in this age group, MDI = metered dose inhaler, HFA = hydrofluoroalkane inhaler, DPI = dry powder inhaler

Addendum 4 Asthma Discharge Checklist



Clinical Readiness for Discharge

- Albuterol - 8 puffs or 5 mg Q4 times 1 dose
- Oxygen Saturation >90 for more than 2 hours

Items Required for Discharge Home

- Asthma **Action Plan**
- Asthma **Education**
- Influenza Vaccine** per hospital protocol if not already received for the year
(not applicable in ED- refer to primary provider)
- Order **Albuterol MDI** and re-label for home use with applicable home instructions
 - Relabel Albuterol inhaler with instructions for use after discharge. If albuterol to be rescheduled after discharge, be specific about dosing schedule and when to change to PRN (if applicable).
 - Note: If less than 100 puffs left in the albuterol inhaler, in addition to relabeling, enter a **prescription for albuterol MDI**.
- Prescription for **Controller** ([addendum 2](#))
- Steroids**: Dexamethasone script for dose #2- 0.6 mg/kg PO x1 (max: 16mg rounded to nearest 1 or 4mg tab) if second dose was not received in the hospital

Family education/ prescription instructions:

Give 24-36 hours after the initial dose, with the 2nd dose preferably in the morning.
Crush and mix in a small bite of food or a teaspoon of liquid that the child prefers.

If the patient received methylprednisolone (Solumedrol) or prednisolone (Orapred), see [addendum 1](#) for steroid management and write an applicable prescription to finish the course of treatment.

- Smoking Cessation**, if indicated

Addendum 5: Acute Care Unit Exclusion Criteria

The exclusion criterion to be applied to potential Acute Care Unit (asthma high-acuity) admissions does not supersede clinician decision-making. Should the clinician feel that the child's placement would be better-suited in a higher level of care despite the presence of exclusion criteria; the clinician's decision should be honored. **None of the below criteria should delay disposition per agreed time criteria between ED/PCRS/ICU.**

- Level of Consciousness
 - If there is any question of altered mental status being present, the child is no longer appropriate for high-acuity unit placement.
- Blood Pressure
 - Common blood pressure side-effects from bronchodilators are **increased** systolic and **decreased** diastolic pressures. NS bolus should be considered once BP fall below normal range.
 - Should the child's diastolic blood pressure fall **below normal standards (not critical low value)** without improvement after **ONE** NS bolus, the child is excluded.
 - Should the child report chest pain in the context of low diastolic blood pressure, then the child is excluded regardless of NS bolus administration.
- Pulmonary Insufficiency
 - Oxygen use alone is not a reason to exclude from admission.
 - After beta-agonist Rx has been applied and 15-20 minutes have passed to allow for equilibration of V/Q mismatch, if the child has **new onset need for oxygen** of greater than 50% FiO₂ then the patient is excluded.

AGE GROUPS FROM COMPASS	NORMAL RANGE	CRITICAL LOW	CRITICAL HIGH
0 – 8 days	65-95	60	100
9 – 28 days	65-95	60	100
29d – 12m	75-95	70	100
13m – 3yr	80-95	75	110
4 – 6yr	85-110	80	120
7 – 13yr	95-130	90	140
14 – 18yr	95-140	90	150
>18yrs	92-170	90	180

0 – 8days	35-71	30	
9 – 28days	35-69	30	
29d – 12mo	35-73	30	
13mo – 3yr	35-73	30	
4 – 6yr	45-73	40	
7 – 13yr	45-81	40	
14 – 18yr	45-84	40	
>18yrs	70-100	50	110

Any patient in an acute care unit scoring an 8 or more should be under the care of the PICU team.

Addendum 6: Dexamethasone (Oral) for the Treatment of Asthma

Administration Information

Children with asthma exacerbation and a Pediatric Asthma Score (PAS) of 3 or more will be given steroids within 1 hour of arriving in the emergency department. When possible, oral dexamethasone (Decadron) will be given at a dose of 0.6 mg/kg (Max 16 mg) x 1 dose.

If the patient cannot swallow tablets, the dexamethasone tabs can be crushed up and mixed with 3-5 ml of Syrpalta (grape syrup) or a bite of applesauce/pudding/ice cream.

For ease of dosing, consider rounding the dexamethasone to the nearest 4mg tab using these weight ranges:

- 8 to 10.9 kg = 6 mg
- 11 to 15.9 kg = 8 mg
- 16 to 23.9 kg = 12 mg
- 24 kg and above = 16 mg

Based on these ranges, the 4 mg tab(s) can be used for all patients and crushed for those too young to swallow it.

One dose of dexamethasone (dosed as mentioned above) will provide anti-inflammatory treatment for 1-2 days. Most patients will not need another dose for at least 24 hours and patients with mild asthma exacerbation may not need another dose. Those with moderate exacerbation will need 2 doses separated by 24-36 hours. More than 2 doses of dexamethasone has not been studied for the treatment of asthma exacerbation.

Outpatient prescriptions for dexamethasone should be written using the 4 mg tabs and rounding to the nearest whole tab (using the weight ranges and doses above) x 1 dose po to be given 24 hrs following the ED or hospital time of administration. Pediatricians should write for a total of 2 doses to be given, separated by 24-36 hours with the first dose given as soon as possible. Additionally, there should be a sentence that states “crush tab(s) between two metal spoons and mix with 1 tsp of juice or 1 bite of food”. All outpatient pharmacies carry the 4 mg tabs.

Best Practice Points to Remember

- To meet the 1 hour metric for corticosteroids, it is best to have the 4 mg tabs loaded in your Omnicell.
- Tabs are the best dosage form for dexamethasone because the commercially available dexamethasone elixir is 30% alcohol and associated with a high rate of emesis.
- Parents should be counseled to give the second dose with food, in the morning, 24-36 hrs after the first dose (due to the common side effect of insomnia/hyperactivity).

Approved by the Pediatric Asthma Evidence-Based Outcomes Center Team

Revision History

Date Approved: June 11, 2014

Revision Date: March 2019, November 2022, June 2024

June 2024 - Full Review. Pharm Steroid Med updates, Change reference to "floor" and "Pulm Unit" to Acute Care Unit, Update Addendum 1 (inpatient wean algorithm updated), Addendum 2 (added Dulera), Addendum 3 (removed Triamcinolone, updated Mometasone/Formoterol dosing), replaced old with new Ascension Texas Pediatric Asthma Albuterol Titration Protocol Severity Score Sheet.

Next Full Review: June 2028

EBOC Leadership Committee:

Sarmistha Hauger, MD
Patty Click, RN
Sheryl Yanger, MD
Tory Meyer, MD
Nilda Garcia, MD
Meena Iyer, MD
Lynn Thoreson, DO
Amanda Puro, MD
Lynsey Vaughan, MD

Asthma Workgroup:

Jenna Summerlin, PharmD
Kelly Bundick, PharmD
Jessica Overgoner, MSRC, RRT-NPS
Keith Kerr, MD
Paul Bauer, MD
Tara Kirkendall, RRT-NPS
Amanda Puro, MD
Joseph Tayar, MD
Michael Auth, MD
Neesha Jayasuriya, RRT-NPS
Sheryl Yanger, MD
Mary Karr, PharmD
Jessica Grunwald, PharmD
Hai Quyen Tran, Pharm D

Recommendations

Practice recommendations were directed by the existing evidence and consensus amongst the content experts. Patient and family preferences were included when possible.

Approval Process

EBOC guidelines are reviewed by DCMC content experts, the EBOC committee, and are subject to a hospital-wide review prior to implementation. Recommendations are reviewed and adjusted based on local expertise.

LEGAL DISCLAIMER: The information provided by Dell Children's Medical Center (DCMC), including but not limited to Clinical Pathways and Guidelines, protocols and outcome data, (collectively the "Information") is presented for the purpose of educating patients and providers on various medical treatment and management. The information should not be relied upon as complete or accurate; nor should it be relied on to suggest a course of treatment for a particular patient. The Clinical Pathways and Guidelines are intended to assist physicians and other health care providers in clinical decision-making by describing a range of generally acceptable approaches for the diagnosis, management, or prevention of specific diseases or conditions. These guidelines should not be considered inclusive of all proper methods of care or exclusive of other methods of care reasonably directed at obtaining the same results. The ultimate judgment regarding care of a particular patient must be made by the physician in light of the individual circumstances presented by the patient. DCMC shall not be liable for direct, indirect, special, incidental or consequential damages related to the user's decision to use this information contained herein.

References

Beta-Agonist

- SIGN: British Guideline on the Management of Asthma: Scottish Intercollegiate Guidelines Network. (2012). *Thorax*. 63 Suppl⁴: iv1-121. <http://www.sign.ac.uk/pdf/grg101.pdf>
- Global Initiative for Asthma (GINA). (2012). Global strategy for asthma management and prevention. Vancouver (WA): Global Initiative for Asthma (GINA). http://www.ginasthma.org/local/uploads/files/GINA_Report_2012Feb13.pdf
- NAEPP: Expert Panel Report 3 (EPR-3): Guidelines for the Diagnosis and Management of Asthma-Summary Report. (2007). [erratum appears in J Allergy Clin Immunol. 2008 Jun;121(6):1330]. *Journal of Allergy & Clinical Immunology*, 120(5 Suppl): S94-138. <http://www.nhlbi.nih.gov/guidelines/asthma/>
- Scarfone RJ, Friedlaender EY. (2002). Beta 2-agonists in acute asthma: the evolving state of the art. *Pediatric Emergency Care*, 8(6):442-427. <http://pediatrics.aappublications.org/content/92/4/513.abstract>
- Schuh S, Reider MJ, Canny G, et al. (1990). Nebulized albuterol in acute childhood asthma: comparison of two doses. *Pediatrics*, 86(4):509-13 <http://www.ncbi.nlm.nih.gov/pubmed/2216613>

Heliox

- SIGN: British Guideline on the Management of Asthma: Scottish Intercollegiate Guidelines Network. (2012). *Thorax*. 63 Suppl⁴: iv1-121. <http://www.sign.ac.uk/pdf/grg101.pdf>
- Bigham, M. T.; Jacobs, B. R.; Monaco, M. A.; Brilli, R. J.; Wells, D., et al. (2010). Helium/oxygen driven albuterol nebulization in the management of children with status asthmaticus: a randomized, placebo-controlled trial. *Pediatric Critical Care*, 11(3), 356-361 <http://www.ncbi.nlm.nih.gov/pubmed/20464778>
- Rivera, M. L.; Kim, T. Y.; Stewart, G. M.; Minasyan, L.; and Brown, L. (2006). Albuterol nebulized in heliox in the initial ED treatment of pediatric asthma: a blinded, randomized controlled trial. *American Journal of Emergency Medicine*, 24(1): 38-42 <http://www.ncbi.nlm.nih.gov/pubmed/16338507>
- Rodrigo, G.; Pollack, C.; Rodrigo, C.; and Rowe, B. H. (2006). Heliox for nonintubated acute asthma patients. *Cochrane Database of Systematic Reviews*, Issue 4. Art. No: CD002884 <http://www.ncbi.nlm.nih.gov/pubmed/14583955>

Ipratropium

- Dotson, K. M. D.; Dallman, M. M. D.; Bowman, C. M. M. D.; and Titus, M. O. M. D. (2009). Ipratropium Bromide for Acute Asthma Exacerbations in the Emergency Setting: A Literature Review of the Evidence. *Pediatric Emergency Care*, 25(10): 687-692 <http://www.ncbi.nlm.nih.gov/pubmed/?term=Ipratropium+Bromide+for+Acute+Asthma+Exacerbations+in+the+Emergency+Setti>
- Hayday, K. and Stevermer, J. J. (2002). In children hospitalized for asthma exacerbations, does adding ipratropium bromide to albuterol and corticosteroids improve outcome? *Journal of Family Practice*, 51(3): 280 Abstract not available
- Iramain, R.; Lopez-Herce, J.; Coronel, J.; Spitters, C.; Guggiari, J.; and Bogado, N. (2011). Inhaled salbutamol plus ipratropium in moderate and severe asthma crises in children. *Journal of Asthma*, 48(3), 298-303 <http://www.ncbi.nlm.nih.gov/pubmed/21332430>
- Pollack C., Pollack E, Baren, M, et al. (2002). A prospective multicenter study of patient factors associated with hospital admission from the emergency department among children with acute asthma. *Archives of Pediatric Adolescent Medicine*. 156(9):934-940. <http://www.ncbi.nlm.nih.gov/pubmed/12197803>
- Qureshi, F., Pestian, J., Davis, P., Zaritsky, A. (1998). Effect of nebulized ipratropium on the hospitalization rates of children with asthma. *New England Journal of Medicine* 339(15): 1030-1035 <http://www.ncbi.nlm.nih.gov/pubmed/?term=Effect+of+nebulized+ipratropium+on+the+hospitalization+rates+of+children+with+asth>
- Ralston, M.E.; Euwema, M.S.; Knecht, K.R.; et al. (2005). Comparison of levalbuterol and racemic albuterol combined with ipratropium bromide in acute pediatric asthma: a randomized controlled trial. *Journal of Emergency Medicine*, 29(1):29-35 <http://www.ncbi.nlm.nih.gov/pubmed/?term=ralston+2005+asthma>
- Rodrigo, G. J. and Castro-Rodriguez, J. A. (2005). Anticholinergics in the treatment of children and adults with acute asthma: a systematic review with meta-analysis. *Thorax*, 60(9): 740-6 <http://www.ncbi.nlm.nih.gov/pubmed/16055613>
- Zorc, J.J., Pusic, M.V., Ogborn, C.J., Lebet, R., and Duggan, A.K. (1999). Ipratropium bromide added to asthma treatment in the pediatric emergency department. *Journal of Pediatrics* 103(4 Pt 1):748-52 <http://www.ncbi.nlm.nih.gov/pubmed/10103297>

Magnesium Sulfate

- Alter, H.J.; Koepsell, T.D.; Hilty, W.M. (2000). Intravenous magnesium as an adjuvant in acute bronchospasm: a meta-analysis. *Annals Emergency Medicine* 36(3):191-7 <http://www.ncbi.nlm.nih.gov/pubmed/10969219>
- Ciarallo, L.; Brousseau, D.; and Reinert, S. (2000). Higher-dose intravenous magnesium therapy for children with moderate to severe acute asthma. *Archives of Pediatrics & Adolescent Medicine*, 154(10): 979-8 <http://www.ncbi.nlm.nih.gov/pubmed/?term=Higher-dose+intravenous+magnesium+therapy+for+children+with+moderate+to+severe+acute+asthma>
- Ciarallo, L.; Sauer, A.H.; Shannon, M.W. (1996). Intravenous magnesium therapy for moderate to severe pediatric asthma: results of a randomized, placebo-controlled trial. *Journal of Pediatrics* 129(6):809-14 www.ncbi.nlm.nih.gov/pubmed/8969721
- Cheuk, D. K., Chau, T. C., & Lee, S. L. (2005). A meta-analysis on intravenous magnesium sulphate for treating acute asthma. *Archives of Disease in Childhood*, 90(1), 74-77 <http://www.ncbi.nlm.nih.gov/pubmed/15613519>
- Devi, P.R.; Kumar, L.; Singhi, S.C.; Prasad, R.; Singh, M. (1997). Intravenous magnesium sulfate in acute severe asthma not responding to conventional therapy. *Indian Pediatrics* 34(5):389-97 <http://www.ncbi.nlm.nih.gov/pubmed/9332112>
- Gürkan, F.; Haspolat, K.; Boşnak, M.; Dikici, B.; Derman, O.; Ece, A. (1999). Intravenous magnesium sulphate in the management of moderate to severe acute asthmatic children nonresponding to conventional therapy. *European Journal of Emergency Medicine* 6(3):201-5 <http://www.ncbi.nlm.nih.gov/pubmed/10622383>
- Mohammed, S. and Goodacre, S. (2007). Intravenous and nebulised magnesium sulphate for acute asthma: systematic review and meta-analysis. *Emergency Medicine Journal*, 24(12): 823-30 <http://www.ncbi.nlm.nih.gov/pubmed/18029512>
- Rowe, B.H.; Bretzlaff, J.A.; Bourdon, C.; Bota, G.W.; Camargo, C.A. Jr. (2000). Intravenous magnesium sulfate treatment for acute asthma in the emergency department: a systematic review of the literature. *Annals of Emergency Medicine* 36(3):181-90 <http://www.ncbi.nlm.nih.gov/pubmed/10969218>

Magnesium Sulfate, continued

- Rowe, B. H.; Bretzlaff, J.; Bourdon, C.; Bota, G.; Blitz, S.; and Camargo, C. A. (2009). Magnesium sulfate for treating exacerbations of acute asthma in the emergency department. *Cochrane Database of Systematic Reviews*, (3), 2009. <http://www.ncbi.nlm.nih.gov/pubmed/10796650>
- Scarfone, R.J.; Loiselle, J.M.; Joffe M.D.; Mull, C.C.; Stiller, S.; Thompson, K.; et al. (2000). A randomized trial of magnesium in the emergency department treatment of children with asthma. *Annals of Emergency Medicine* 36(6):572–8 <http://www.ncbi.nlm.nih.gov/pubmed/11097697>
- Silverman, R.A., Osborn, H., Runge, J., Gallagher, E.J., Chiang, W., Feldman, J., et al. (2000). Acute Asthma/Magnesium Study Group. IV magnesium sulfate in the treatment of acute severe asthma: a multicenter randomized controlled trial. *Chest* 122(2):489–97 <http://www.ncbi.nlm.nih.gov/pubmed/12171821>
- Torres, S., Sticco, N., Bosch, J. J., Iolster, T., Siaba, A., et al. (2012). Effectiveness of magnesium sulfate as initial treatment of acute severe asthma in children, conducted in a tertiary-level university hospital. A randomized, controlled trial. *Archives of Argentinian Pediatrics*, 110(4), 291-296 <http://www.ncbi.nlm.nih.gov/pubmed/22859321>

Noninvasive Positive Pressure Ventilation

- Abramo, T.J. and Wiebe, R.A. (2007). Comparison of intravenous terbutaline versus normal saline in pediatric patients on continuous high-dose nebulized albuterol for status asthmaticus. *Pediatric Emergency Care*, 23(6):355-361 <http://www.ncbi.nlm.nih.gov/pubmed/17572517>
- Bogie, A.L.; Towne, D.; Luckett, P.M.; Abramo, T.J.; Wiebe, R.A. (2007). Comparison of intravenous terbutaline versus normal saline in pediatric patients on continuous high-dose nebulized albuterol for status asthmaticus. *Pediatric Emergency Care*, 23(6):355-361 <http://www.ncbi.nlm.nih.gov/pubmed/17572517>
- Lafond, C.; Series, F.; and Lemiere, C. (2007). Impact of CPAP on asthmatic patients with obstructive sleep apnea. *European Respiratory Journal*, 29(2):307-311 <http://www.ncbi.nlm.nih.gov/pubmed/17050561>
- Loh, L.E.; Chan, Y.H.; and Chan, I. (2007). Noninvasive ventilation in children: a review. *Journal of Pediatrics*, 83(2 Suppl): S91 -S99 <http://www.ncbi.nlm.nih.gov/pubmed/17486195>
- Ram, F.S.F., Wellington, S.R., Rowe, B., and Wedzicha, J.A. (2005). Non-invasive positive pressure ventilation for treatment of respiratory failure due to severe acute exacerbations of asthma. *Cochrane Database of Systematic Reviews*, Issues 3. Art. No.: CD004360. DOI: 10.1002/14651858.CD004360.pub3. <http://www.ncbi.nlm.nih.gov/pubmed/16034928>
- Soma, T., Hino, M., Kida, K., Kudoh, S. (2008). A prospective and randomized study for improvement of acute asthma by non-invasive positive pressure ventilation (NPPV). *Internal Medicine*, 47() :493-501 <http://www.ncbi.nlm.nih.gov/pubmed/18344635>
- Yim, S., Fredberg, J.J., and Malhotra, A. (2007). Continuous positive airway pressure for asthma: not a big stretch? *European Respiratory Journal*, 29(2):226-228 <http://www.ncbi.nlm.nih.gov/pmc/articles/PMC3496923/>

Oxygen

- Ribeiro de Andrade, C.; Duarte, M. C.; and Camargos, P. (2007). Correlations between pulse oximetry and peak expiratory flow in acute asthma. *Brazilian Journal of Medical & Biological Research*, 40(4): 485-90 <http://www.ncbi.nlm.nih.gov/pubmed/?term=ribeiro+de+andrade+2007+asthma>
- Geelhoed, G. L. L., ; Le Souef. (1994). Evaluation of SaO₂ as a predictor of outcome in 280 children presenting with acute asthma. *Annals of Emergency Medicine* 23(6):1236-41. [http://www.ncbi.nlm.nih.gov/pubmed/?term=Evaluation+of+SaO₂+as+a+predictor+of+outco+me+in+280+children+presenting+with+acute+asthma](http://www.ncbi.nlm.nih.gov/pubmed/?term=Evaluation+of+SaO2+as+a+predictor+of+outco+me+in+280+children+presenting+with+acute+asthma)
- Gorelick, M. H.; Stevens, M. W.; Schultz, T.; and Scribano, P. V. (2004). Difficulty in obtaining peak expiratory flow measurements in children with acute asthma. *Pediatric Emergency Care*, 20(1): 22-6 <http://www.ncbi.nlm.nih.gov/pubmed/?term=Difficulty+in+obtaining+peak+expiratory+flo+w+measurements+in+children+with+acute+asthma>
- Keahey, L.; Bulloch, B.; Becker, A. B.; Pollack Jr., C. V.; Clark, S.; Camargo Jr., C. A. (2002). Multicenter Asthma Research Collaboration, I.: Initial oxygen saturation as a predictor of admission in children presenting to the emergency department with acute asthma. *Annals of Emergency Medicine*, 40(3): 300-7 <http://www.ncbi.nlm.nih.gov/pubmed/12192354>
- Sole, D.; Komatsu, M. K.; Carvalho, K. V.; and Naspitz, C. K. (1999). Pulse oximetry in the evaluation of the severity of acute asthma and/or wheezing in children. *Journal of Asthma*, 36(4): 327-33 <http://www.ncbi.nlm.nih.gov/pubmed/10386496>

Scoring Tool: Modified Quereshi PAS

- NAEPP: Expert Panel Report 3 (EPR-3): Guidelines for the Diagnosis and Management of Asthma- Summary Report. (2007). [erratum appears in *J Allergy Clin Immunol*. 2008 Jun;121(6):1330]. *Journal of Allergy & Clinical Immunology*, 120(5 Suppl): S94-138. <http://www.nhlbi.nih.gov/guidelines/asthma/>
- SIGN: British Guideline on the Management of Asthma: Scottish Intercollegiate Guidelines Network. (2012). *Thorax*. 63 Suppl4: iv1-121. <http://www.sign.ac.uk/pdf/grg101.pdf>
- Kelly, C.S.; Littelman, C.A.; Pestian, J.P., et al. (2000). Improved outcomes for hospitalized asthmatic children using a clinical pathway. *Annals of Allergy, Asthma, & Immunology*, 84:509-516. <http://www.ncbi.nlm.nih.gov/pubmed/10831004>
- Smith, S.R.; Baty, J.D.; and Hodge, D. (2002). Validation of the pulmonary score: an asthma severity scores for children. *Academic Emergency Medicine*, 9:99-104. <http://www.ncbi.nlm.nih.gov/pubmed/11825832>
- Ducharme, F.M.; Chalut, D.; Plotnick, L.; Savdie, C., et al. (2008). The Pediatric Respiratory Assessment Measure: a valid clinical score for assessing acute asthma severity from toddlers to teenagers. *Journal of Pediatrics*, 152; 476-80. <http://www.ncbi.nlm.nih.gov/pubmed/18346499>
- Liu, L.L.; Gallaher M.M.; David, R.L.; Rutter, C.M.; et al. (2004). Use of a respiratory clinical score among different providers. *Pediatric Pulmonology*, 37:243-248. <http://www.ncbi.nlm.nih.gov/pubmed/14966818>
- Gorelick, M. H.; Stevens, M. W.; Schultz, T.; and Scribano, P. V. (2004). Difficulty in obtaining peak expiratory flow measurements in children with acute asthma. *Pediatric Emergency Care*, 20(1): 22-6 <http://www.ncbi.nlm.nih.gov/pubmed/?term=Difficulty+in+obtaining+peak+expiratory+flow+measurements+in+children+with+acute+asthma>

General

- Lieberman JA. Trials and tribulations of managing pediatric and adolescent asthma. *Ann Allergy Asthma Immunol*. 2024 Jan;132(1):1-2. doi: 10.1016/j.anaai.2023.10.002. PMID: 38123277.
- Goodman K, Arriaga RI, Korman R, Zafar F, Stephens C, Kumari P, Jayaprakash K, Fitzpatrick AM, Cooper N, Morris CR. Pediatric emergency department-based asthma education tools and parent/child asthma knowledge. *Allergy Asthma Clin Immunol*. 2024 Mar 25;20(1):24. doi: 10.1186/s13223-024-00884-w. PMID: 38528606; PMCID: PMC10964685.
- Hon KLE, Ng DKK, Chiu WK, Leung AKC. Insights from Overarching Selective International Guidelines for Pediatric Asthma. *Curr Pediatr Rev*. 2024 Jan 29. doi: 10.2174/0115733963270829231221062201. Epub ahead of print. PMID: 38288811.

Steroids

- Altamimi, S., Robertson, G., Jastaniah, W., et al. (2006). Single-dose oral dexamethasone in the emergency management of children with exacerbations of mild to moderate asthma. *Pediatric Emergency Care*, 22(12):786-93 <http://www.ncbi.nlm.nih.gov/pubmed/17198210>
- Andrews, A.L., Wong, K.A., Heine, et al. (2012). A cost-effectiveness analysis of dexamethasone versus prednisone in pediatric acute asthma exacerbation. *Society for Academic Emergency Medicine*. 19, 943-948. <http://www.ncbi.nlm.nih.gov/pubmed/22849379>
- SIGN: British Guideline on the Management of Asthma: Scottish Intercollegiate Guidelines Network. (2012). *Thorax*. 63 Suppl: iv1-121. <http://www.sign.ac.uk/pdf/grq101.pdf>
- Camargo, C. A., Jr.; Rachelefsky, G.; and Schatz, M. (2009). Managing asthma exacerbations in the emergency department: summary of the National Asthma Education and Prevention Program Expert Panel Report 3 guidelines for the management of asthma exacerbations. *Journal of Emergency Medicine*, 37(2 Suppl): S6-S17. Abstract not available
- Edmonds, M.; Camargo, C. A.; Pollack, C. V.; and Rowe, B. H. (2009). Early use of inhaled corticosteroids in the emergency department treatment of acute asthma. *Cochrane Database of Systematic Reviews*, (4) Abstract not available
- Global Initiative for Asthma (GINA). (2012). Global strategy for asthma management and prevention. Vancouver (WA): Global Initiative for Asthma (GINA). http://www.ginasthma.org/local/uploads/files/GINA_Report_2012Feb13.pdf
- Gordon, S., Tompkins, T., and Dayan, P.S. (2007). Randomized trial of single-dose intramuscular dexamethasone compared with prednisolone for children with acute asthma. *Pediatric Emergency Care*, 23(8):521-7 <http://www.ncbi.nlm.nih.gov/pubmed/17726409>
- Greenberg, R.A., Kerby, G., and Roosevelt, G.E. (2008). A comparison of oral dexamethasone with oral prednisone in pediatric asthma exacerbations treated in the emergency department. *Clinical Pediatrics*, (8):817-23 <http://www.ncbi.nlm.nih.gov/pubmed/18467673>
- Hames, H., Seabroock, J.A., Matsui, D. et al. (2008). A palatability study of a flavored dexamethasone preparation versus prednisolone liquid in children with asthma exacerbation in a pediatric emergency department. *Canadian Journal of Clinical Pharmacology*, 15 (1), 95-98. <http://www.ncbi.nlm.nih.gov/pubmed/18245869>
- Kravitz, J., Dominici, P., Ufberg, J., et al. (2011). Two days of dexamethasone versus 5 days of prednisone in the treatment of acute asthma: a randomized controlled trial. *Annals of Emergency Medicine*, 58(2):200-4, 2011 <http://www.ncbi.nlm.nih.gov/pubmed/21334098>
- NAEPP: Expert Panel Report 3 (EPR-3): Guidelines for the Diagnosis and Management of Asthma-Summary Report. (2007). [erratum appears in *J Allergy Clin Immunol*. 2008 Jun;121(6):1330]. *Journal of Allergy & Clinical Immunology*, 120(5 Suppl): S94-138. <http://www.nhlbi.nih.gov/guidelines/asthma/>
- Qureshi, F.A., Zaritsky, A., Poirier, M.(2001). Comparative efficacy of oral dexamethasone versus oral prednisone in acute pediatric asthma. *Journal of Pediatrics*, 139, 20-26. <http://www.ncbi.nlm.nih.gov/pubmed/?term=Comparative+efficacy+of+oral+dexamethasone+versus+oral+prednisone+in+acute+pediatric+asthma>
- Rowe, B.; Spooner, C.; Ducharme, F.; Bretzlaff, J.; Bota, G. (2009). Early emergency department treatment of acute asthma with systemic corticosteroids [Systematic Review]. *Cochrane Database of Systematic Reviews*, 1:1 <http://calgaryem.com/files/CD002178.pdf>
- Scarfone, R.J.; Fuchs, S.M.; Nager, A.L.; Shane, S.A. (1999). Controlled trial of oral prednisone in the emergency department treatment of children with acute asthma. *Pediatrics* 92(4):513 <http://www.ncbi.nlm.nih.gov/pubmed/8414819>
- Williams, K.W., Andrews, A.L., Heine, D.H. et al. (2012). Parental preference for short- versus long-course corticosteroid therapy in children with asthma presenting to the pediatric emergency department. *Clinical Pediatrics*. Oct 3 [Epub ahead of print] <http://www.ncbi.nlm.nih.gov/pubmed/?term=Parental+preference+for+short+versus+long+course+corticosteroid+therapy+in+children+with+asthma+pr>
- Bohannon K, Machen R, Ragsdale C, Padilla-Tolentino E, Cervenka P. Dexamethasone Associated with Significantly Shorter Length of Hospital Stay Compared to a Prednisolone Based Regimen in Pediatric Patients with Mild-Moderate Acute Asthma Exacerbations. *Clinical Pediatrics* 2019, accepted for publication
- Sule Doymaz, Youssef E. Ahmed, Densley Francois, Rohit Pinto, Ramon Gist, Miriam Steinberg & Clara Giambruno (2022) Methylprednisolone, dexamethasone or hydrocortisone for acute severe pediatric asthma: does it matter?, *Journal of Asthma*, 59:3, 590-596, DOI: 10.1080/02770903.2020.1870130
- Giuliano JS Jr, Faustino EV, Li S, Pinto MG, Canarie MF, Carroll CL; Northeast Pediatric Critical Care Research Consortium (NEPCCRC). Corticosteroid therapy in critically ill pediatric asthmatic patients. *Pediatr Crit Care Med*. 2013 Jun;14(5):467-70. doi: 10.1097/PCC.0b013e31828a7451. PMID: 23628833.

Terbutaline

- Geelhoed, G. L. L.; Le Souef, PN: Evaluation of SaO2 as a predictor of outcome in 280 children presenting with acute asthma *Annals of Emergency Medicine* 23(6):1236-41, 1994 <http://www.ncbi.nlm.nih.gov/pubmed/?term=Evaluation+of+SaO2+as+a+predictor+of+outco+me+in+280+children+presenting+with+acute+asthma>
- Bogie AL, Towne D, Luckett PM, et al. Comparison of intravenous terbutaline versus normal saline in pediatric patients on continuous high-dose nebulized albuterol for status asthmaticus. *Pediatric Emergency Care*, 23(6):355-61, 2007 <http://www.ncbi.nlm.nih.gov/pubmed/17572517>
- Carroll CL, Schramm CM. Protocol-based titration of intravenous terbutaline decreases length of stay in pediatric status asthmaticus. *Pediatric Pulmonology*, 41(4):350-6, 2006 <http://www.ncbi.nlm.nih.gov/pubmed/16502398>
- Jones GH, Scott SJ. Continuous infusions of terbutaline in asthma - a review. *Journal of Asthma*. 48(8):753-6, 2011 <http://www.ncbi.nlm.nih.gov/pubmed/21942352>
- Travers AH, Milan SJ, Jones AP, et al. Addition of intravenous beta(2)-agonists to inhaled beta(2)-agonists for acute asthma. *Cochrane Database Systematic Reviews*, (12), 2012 <http://www.ncbi.nlm.nih.gov/pubmed/23235685>
- Payne, D. N.; Balfour-Lynn, I. M.; Biggart, E. A.; Bush, A.; and Rosenthal, M. (2002). Subcutaneous terbutaline in children with chronic severe asthma. *Pediatric Pulmonology*, 33(5), 356-361 <http://onlinelibrary.wiley.com/doi/10.1002/ppul.10081/abstract>